



Porfolio

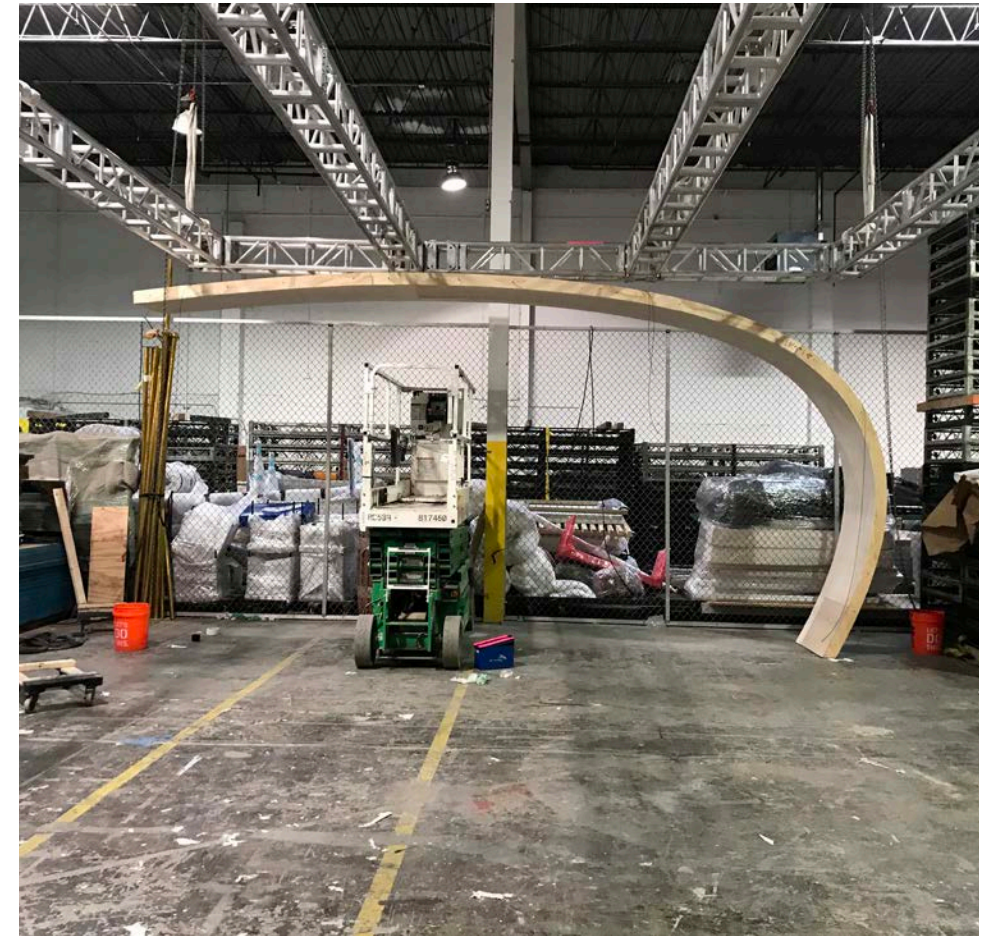
Jack Murphy

Draftsman / Designer

Dior Mens Fashion Show Miami 2019
9/2019 - 12/2019

- Lead Draftsman on project.
- Designed structure and assembly of 'wave'.
- Prepared plywood sweeps for CNC.
- Lead construction crew in Miami.

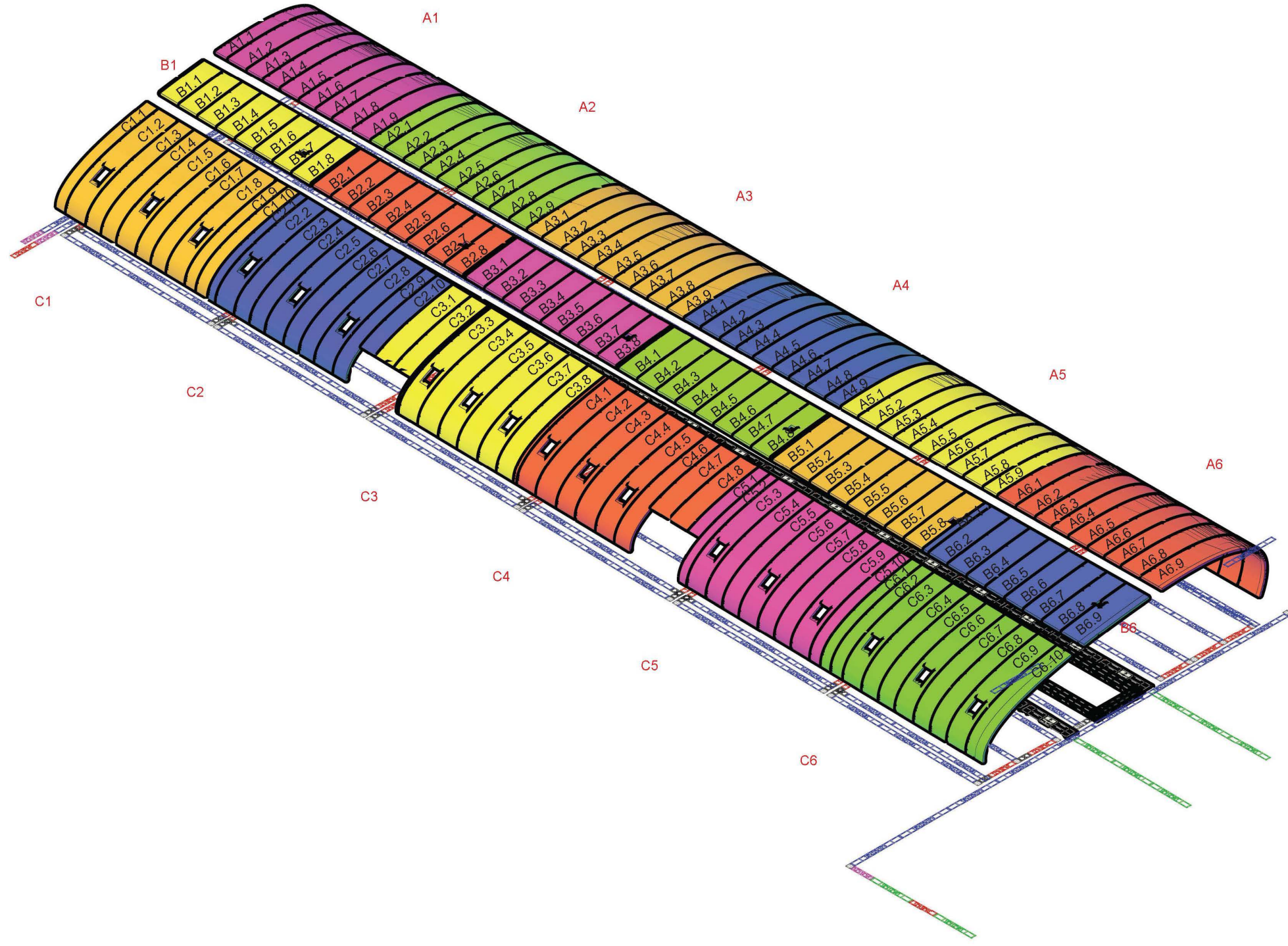




Dior Mens Fashion Show Miami 2019
9/2019 - 12/2019

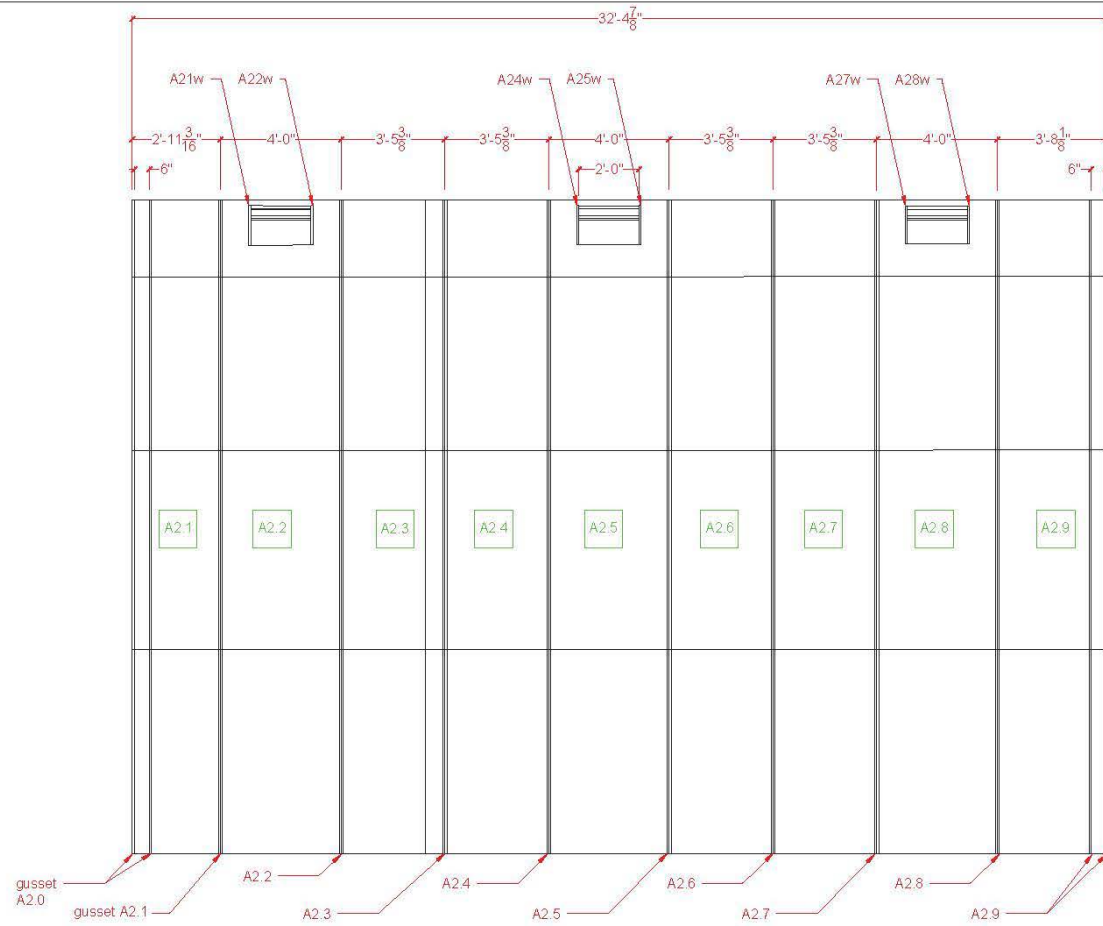
- Lead Draftsman on project.
- Designed structure and assembly of 'wave'.
- Prepared plywood sweeps for CNC.
- Lead construction crew in Miami .

Dior Mens

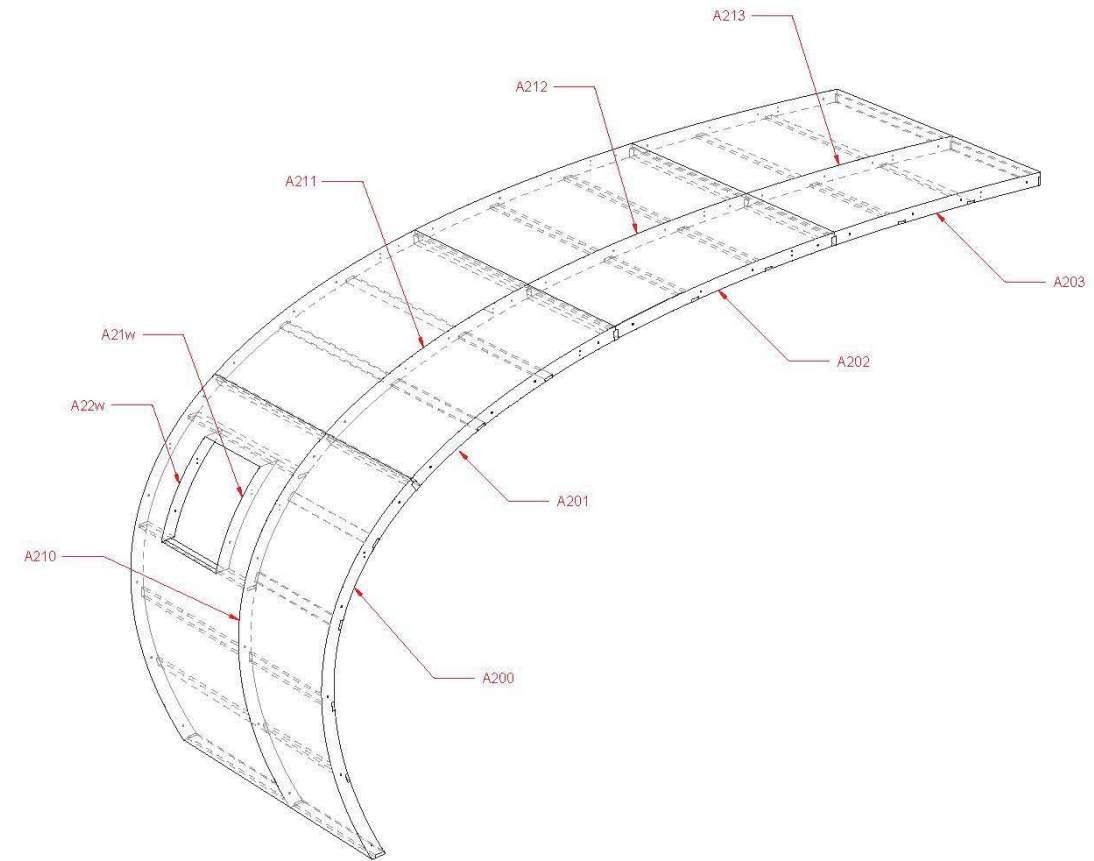


	Dior Mens	SCALE:	DRAWING #	
	2019-1207	SCALE:		
	FINAL ISO	PROJECT MANAGER:		21
	PRODUCERS NAME	Serge Hunkins		
	Miami Warehouse Space	DRAWN BY:		
	12.3.19	Jack Murphy		
	DRAWING FILE:	FINAL TRUSS PLACEMENT ON WAVE 2.dwg		
	DATE DRAWN:	11/23/19		
	PLOT DATE:	11/23/19		

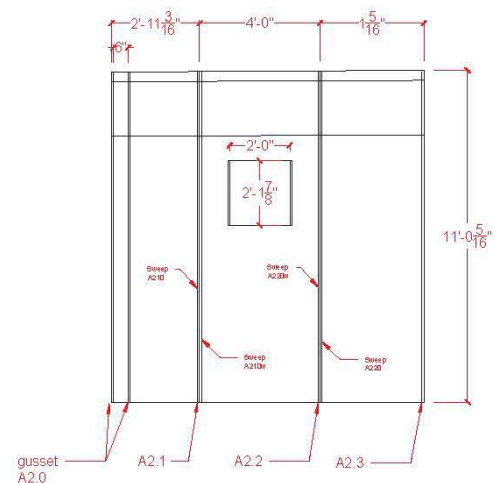
DIOR MENS - A2 - BUILD



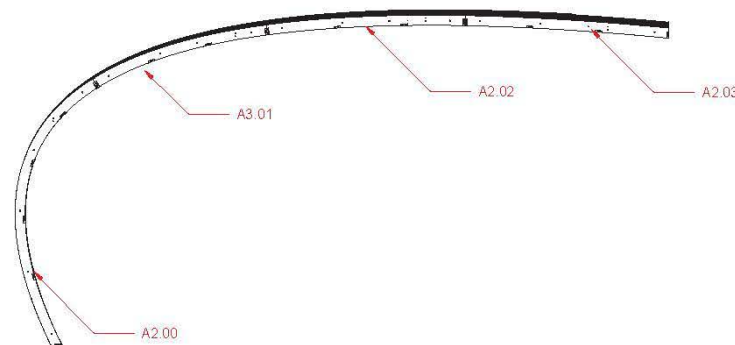
1
A2 A2 BUILD - PLAN



4
A2 A2 BUILD - ISO



2
A2 A2 BUILD - ELEVATION



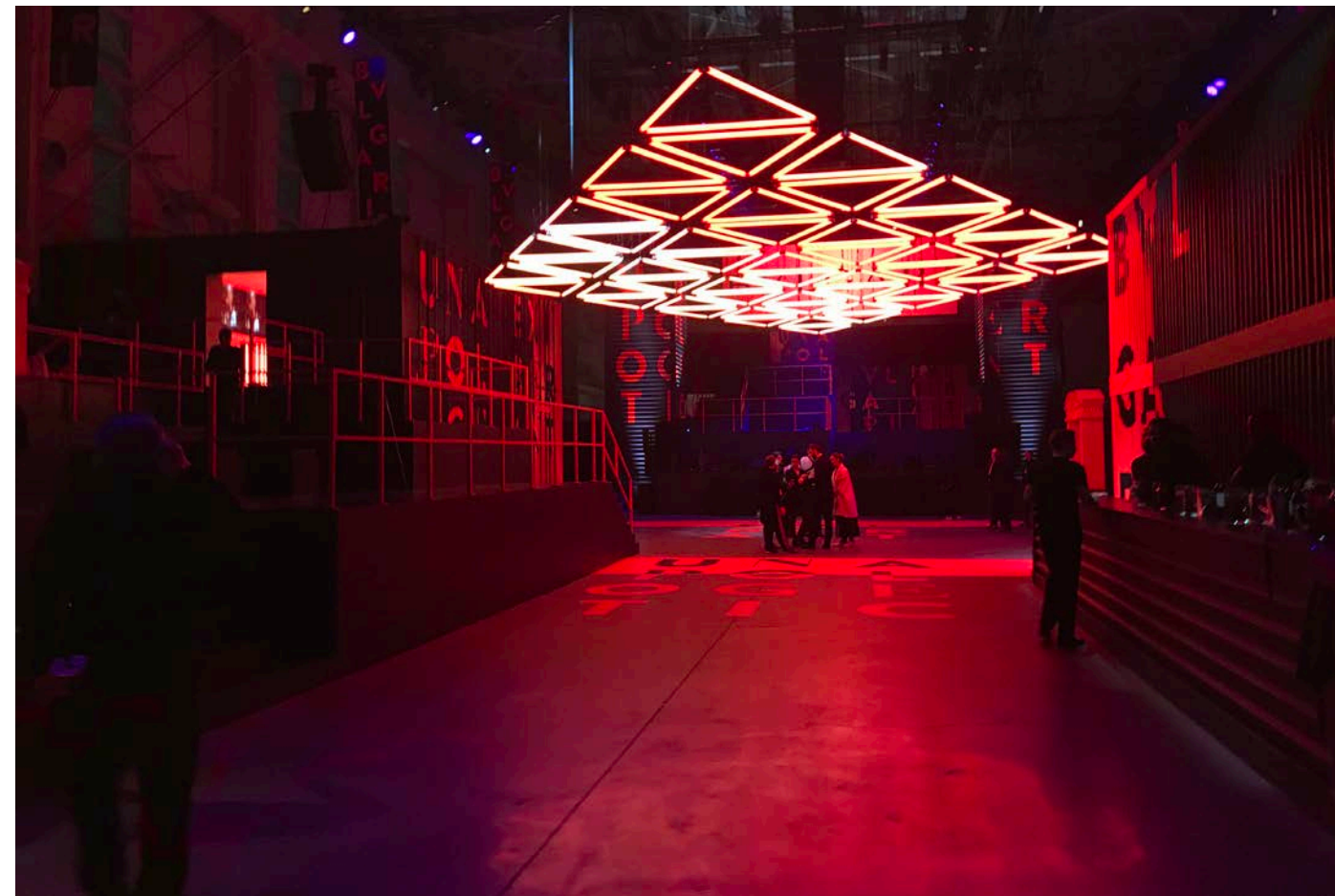
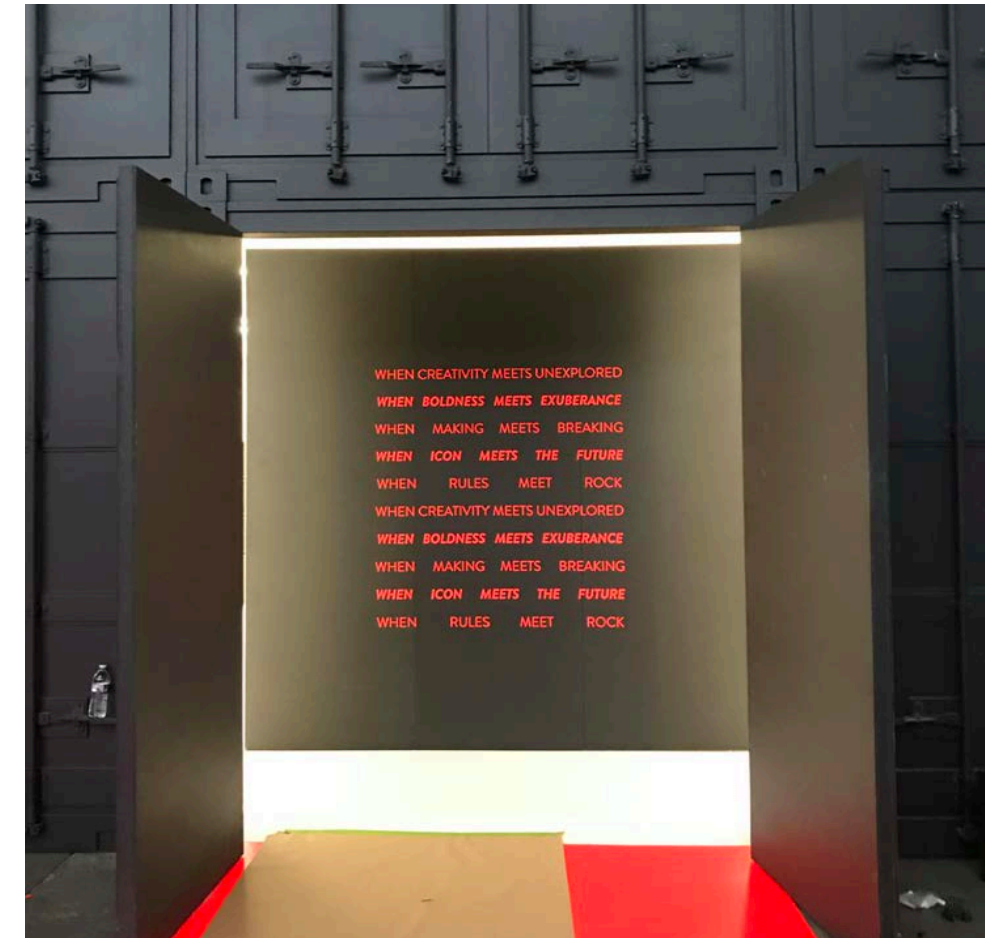
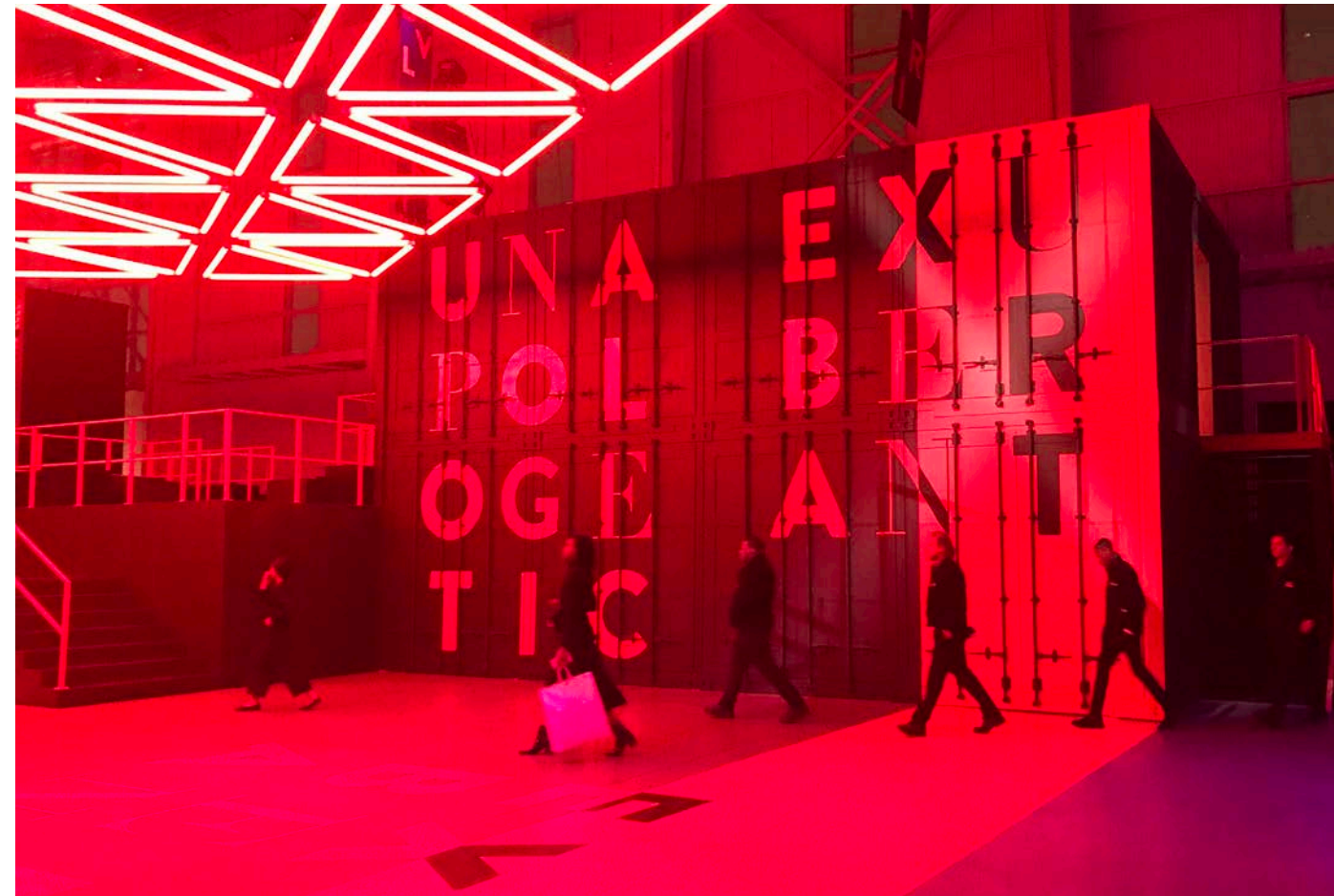
3
A2 A2 BUILD - ELEVATION
Scale: 1/2" = 1'

	Dior Mens	SCALE	DRAWING #
	2019-1207	SCALE	
	A2 - BUILD	PROJECT MANAGER: Serge Hunkens	
	PRODUCERS NAME	DRAWN BY: Jack Murphy	
	Miami Warehouse Space	DRAWING FILE: A2.dwg	
12.3.19	DATE DRAWN: 11/6/19	PLOT DATE: 11/23/19	

BVLGARI Unapologetic Event 2020
12/2019 - 2/2020

- Lead Draftsman on project.
- Designed look-like shipping container.
- Lead construction crew on-site.

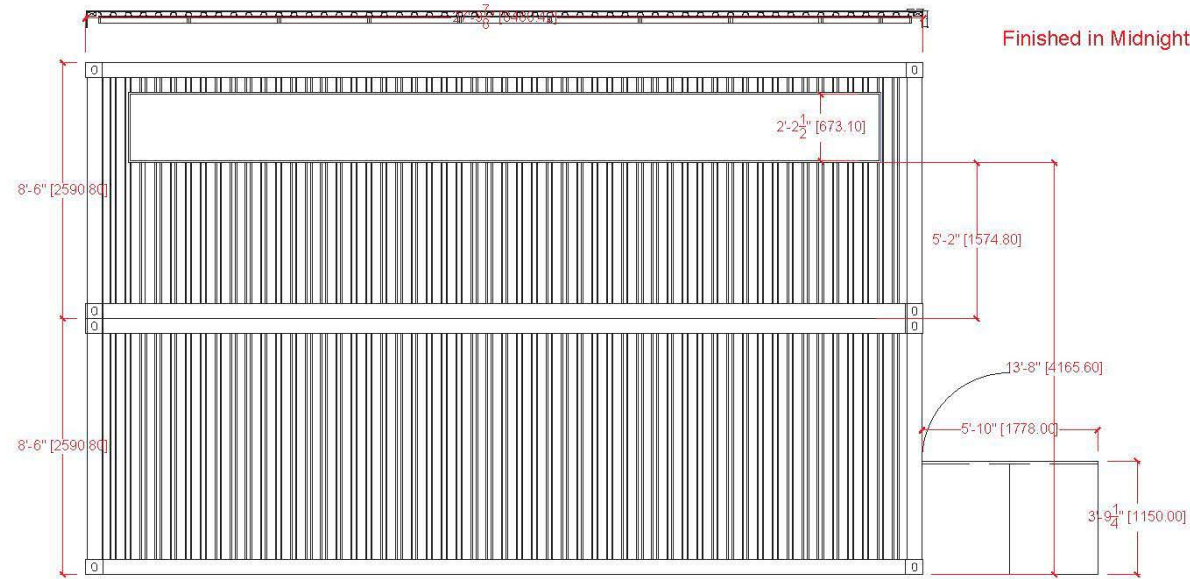




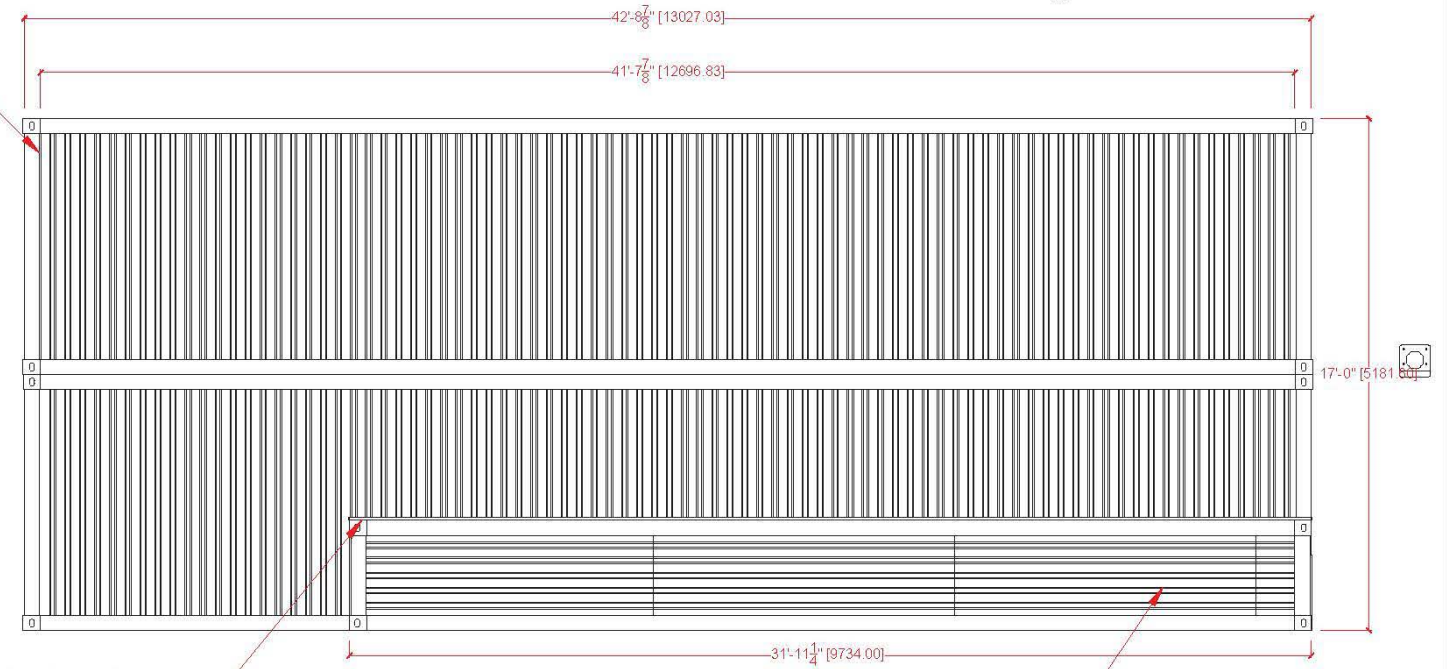
BVLGARI Unapologetic Event 2020
12/2019 - 2/2020

- Lead Draftsman on project.
- Designed look-like shipping container.
- Lead construction crew on-site.

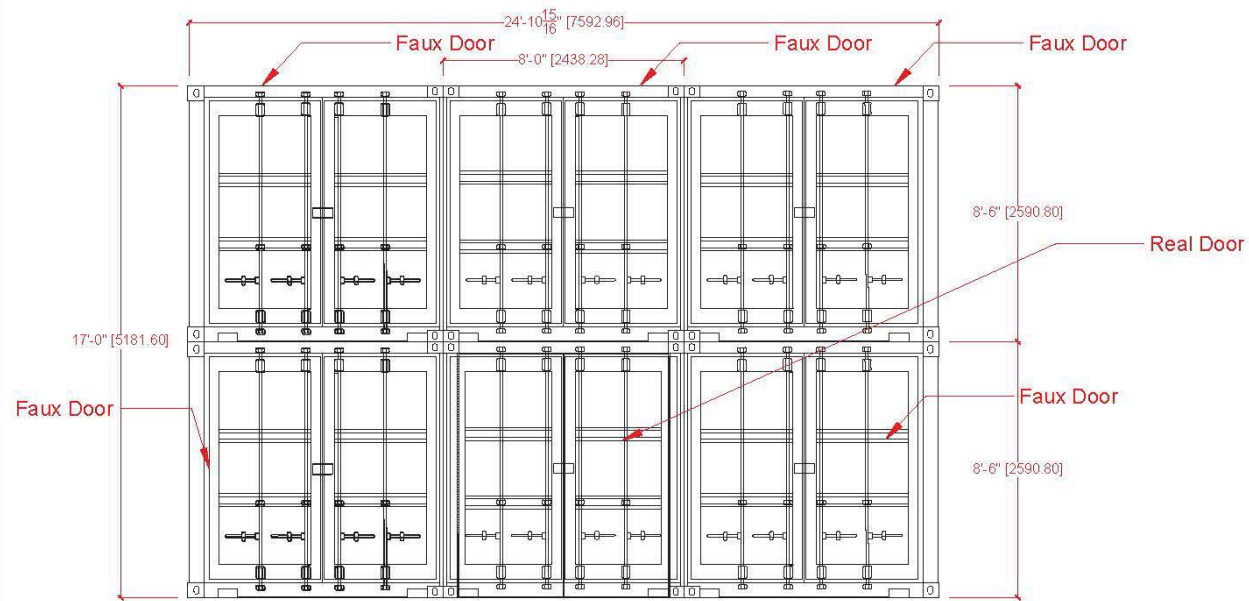
Bulgari



1 Right Elevation- Visionary Room
Scale: 1/2" = 1'



2 Front Elevation - Visionary Room
Scale: 1/4" = 1'



3 Left Elevation- Visionary Room
Scale: 1/2" = 1'

	Bulgari	SCALE: 3/8"=1'-0"	DRAWING # 9.01
	2020-9999	PROJECT MANAGER: Patrick McCluskey	
	Visionary Room- 2	DRAWN BY: Jack Murphy	
	KDC	DRAWING FILE: 202-9999 Bulgari Visionary Room 2.dwg	
	Duggal Greenhouse	DATE DRAWN: 1/21/20	
	2.6.20	PLOT DATE: 2/2/20	



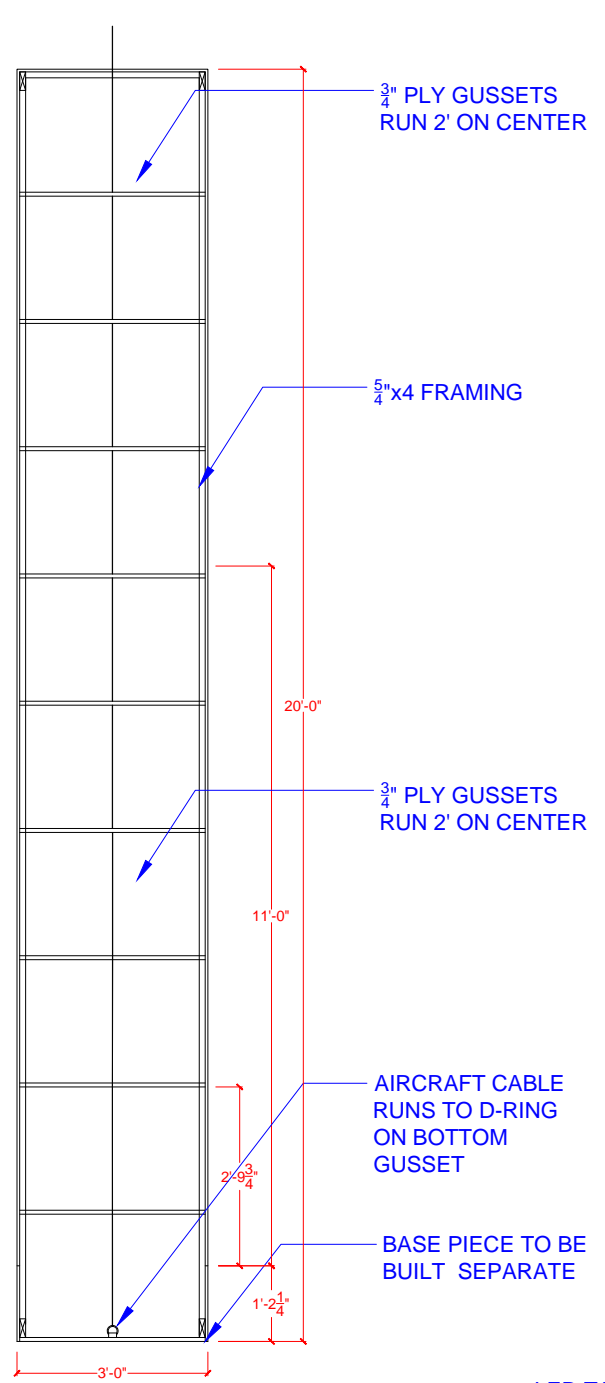
The Drew Barrymore Show
6/2020 - 9/2020

- Drafted/ modelled stage flooring,
main stage columns, masking walls,
etc.

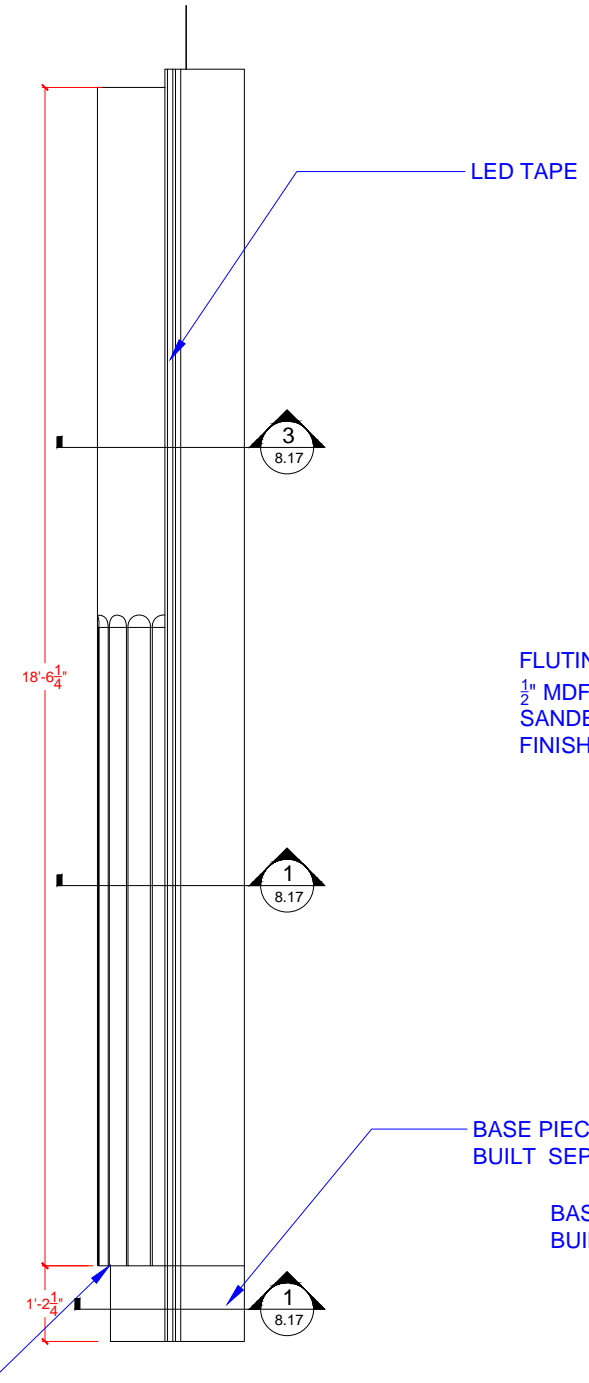


BUILD 2

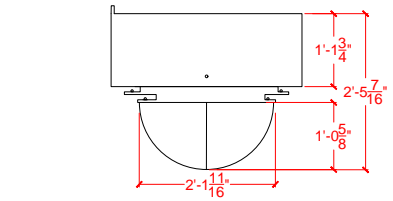
DREW



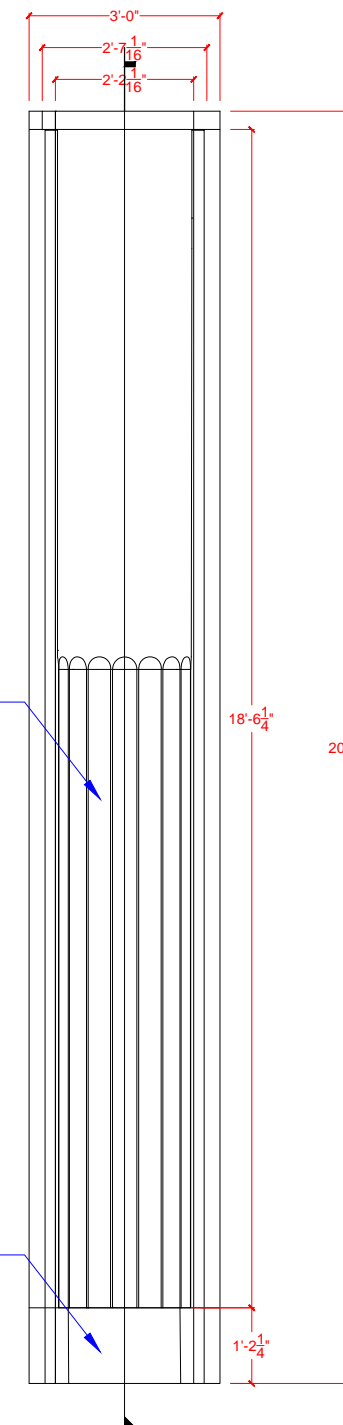
2 Left Elevation
8.17 Scale: 3/4" = 1'



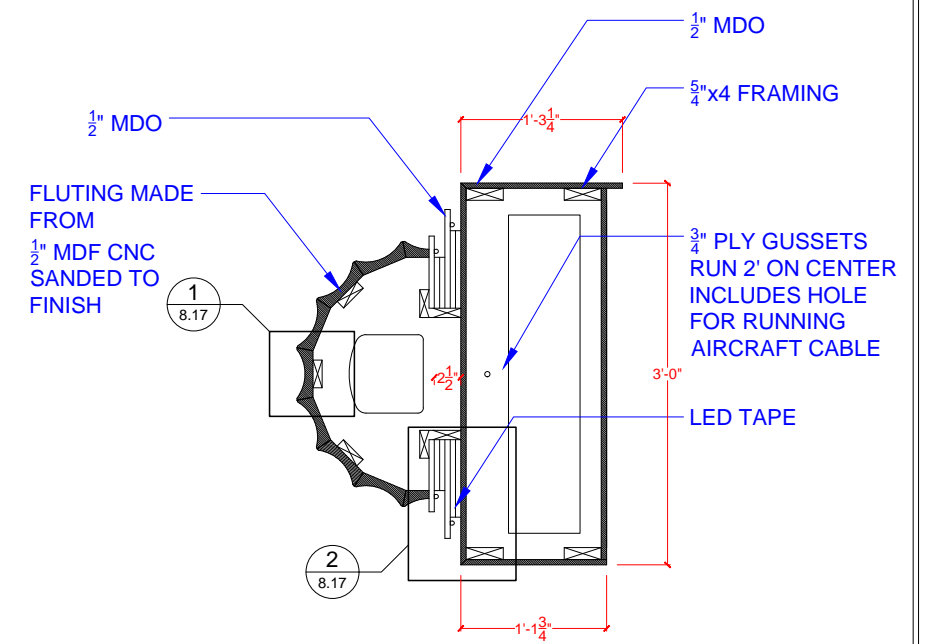
2 Left Elevation
8.17 Scale: 3/4" = 1'



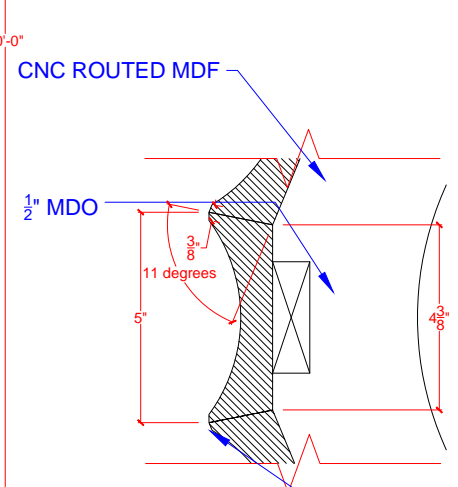
1 Plan View
8.17 Scale: 3/4" = 1'



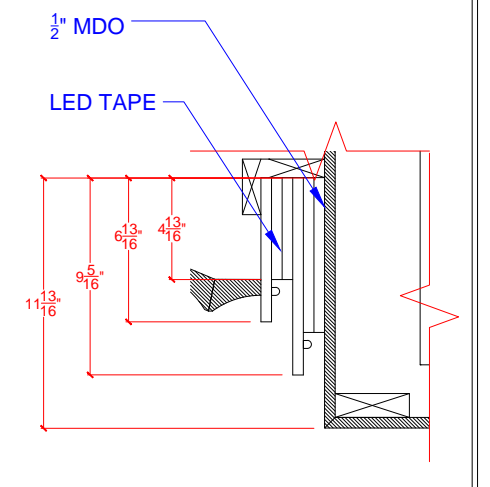
3 Front Elevation
8.17 Scale: 3/4" = 1'



SECTION 1



DETAIL 1



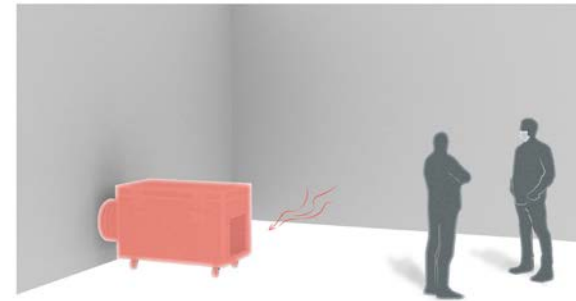
DETAIL 2

KADAN PRODUCTIONS <small>555 - 52 HAYES RD BRIDGEVIEW, IL 60455 PH: 708-322-1284 @KADANINC.COM</small>	DREW	SCALE:	DRAWING #	
	2020-9999	SCALE		
	DREW Columns V2 - 1	PROJECT MANAGER: Pat McCluskey		8.17
	PRODUCERS NAME	DRAWN BY: Jack Murphy		
	CBS Studios	DRAWING FILE: DREW Columns V2.dwg		
7.20.20	DATE DRAWN: 6/29/20			
	PLOT DATE: 6/21/21			

IMPLEMENTATION & METHODOLOGY

1- Mervion Air Scrubber

- Air quality will be assessed within the space and an air sanitation plan will be implemented. VIM teams specializing in HVAC systems can install air scrubbers and filtration systems to purify the air.

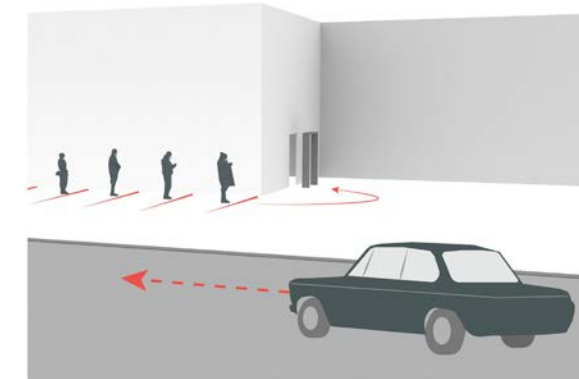


2- Wellness stations

- Freestanding all-in-one check-in station features touch-less thermometer readings and an iPad based Guest Wellness Form for symptom checks.
- Includes hand sanitizer dispensers, and a TV monitor to display safety messaging.

3- Social Distancing

- Draw up site plans to include "safe corridors of social distancing" for vendors, producers, and guests during the load-in, event, and strike.
- Plans will also be vetted by a NYC architect for NYC DOB/DOH, Fire safety compliance, and licensed by engineer.

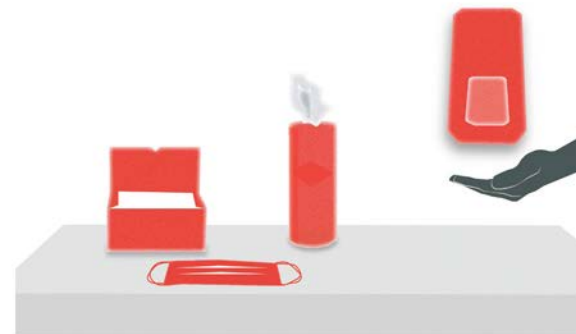


4- Traffic Coordination

- Create and review a Production/Safety schedule for vehicle and person traffic into and out of the venue.

5- Protocol Check

- Check venue for their cleaning protocol
- Create an easy to use log to make sure hand washing, pre-entry temperature checking, and disinfecting high-touch surfaces are part of the events daily functionality.
- If PPE is not available VIM will provide PPE including masks, nitrile gloves, hand sanitizing stations, and environmentally responsible disposal.



7- Disinfection

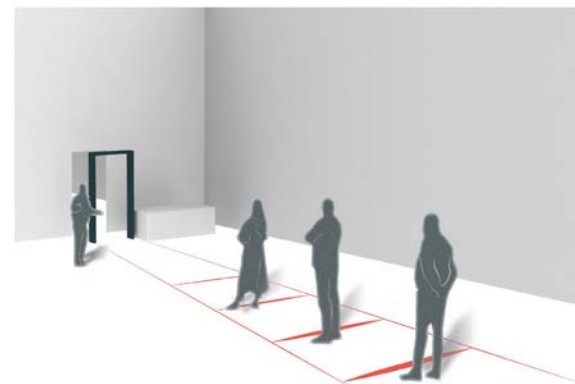
- Send in an OSHA HAZWOPER 40 certified cleaning team in protective gear before any work starts to sanitize and disinfect all materials entering the venue, front and back of house areas, and HVAC ducting.
- Same teams will remain onsite to insure all methodology is being followed throughout the event.



VIM Services

5/2020 - 1/2021

- Designed VIM informational graphics packet for potential clientel and website.



6- Ingress & Egress

- Safe and timed ingress and egress, with staggered timing will be implemented in conjunction with onsite security to ensure crowds are avoided.
- Floors will be marked conspicuously to make sure venue occupants maintain social distancing guidelines.



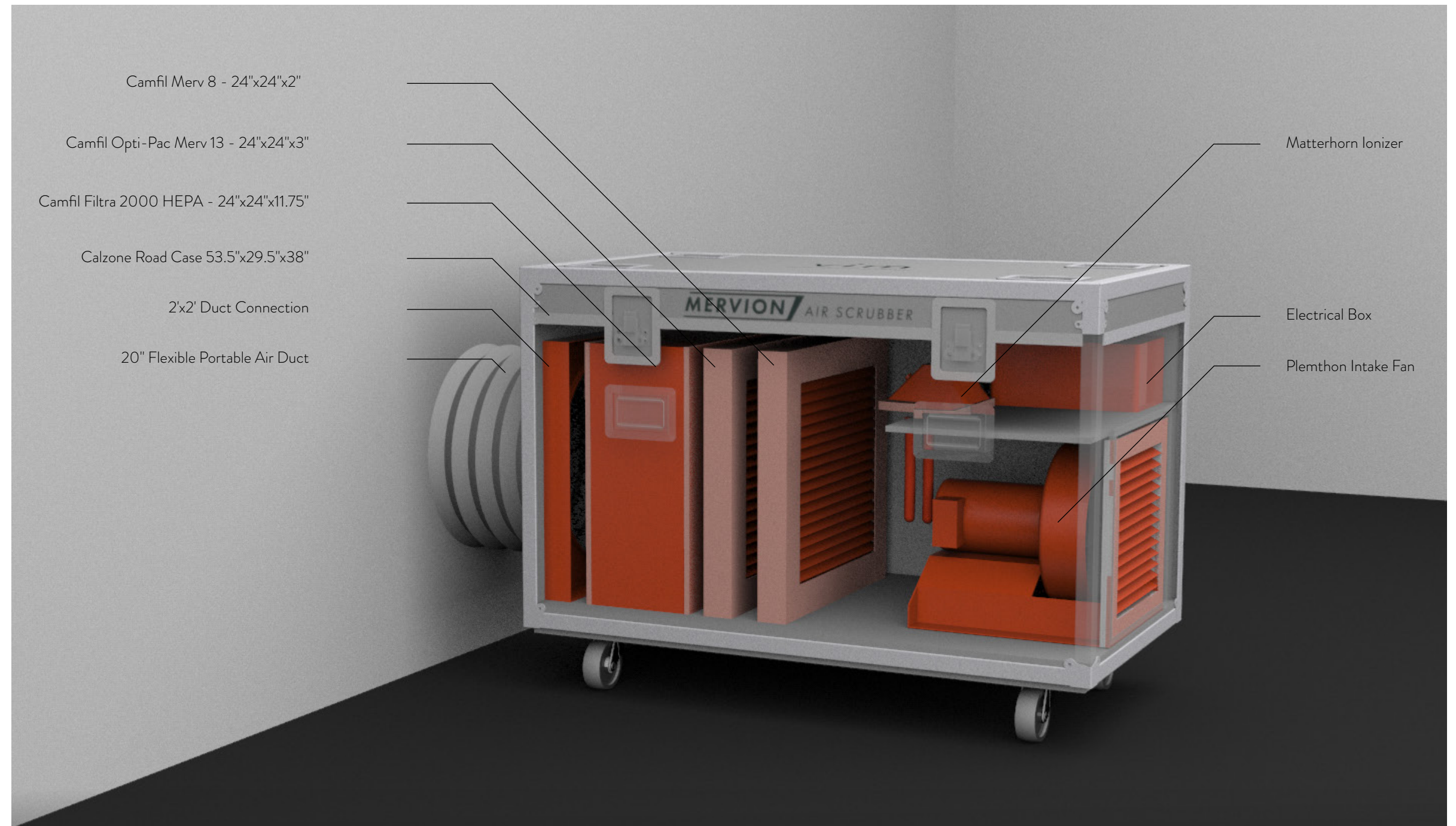
8- Equipment Sanitization

- All incoming equipment will be sanitized by the VIM team and any high traffic or multi-user touch areas such as lecterns, workstations, common areas and restrooms will be sanitized at the beginning and end of each event day. Proper disposal of used cleaning materials and PPE will be provided.



VIM Services
5/2020 - 1/2021

- Designed VIM stationary and newsletter graphics.



Camfil Merv 8 - 24"x24"x2"
 Camfil Opti-Pac Merv 13 - 24"x24"x3"
 Camfil Filtra 2000 HEPA - 24"x24"x11.75"
 Calzone Road Case 53.5"x29.5"x38"
 2'x2' Duct Connection
 20" Flexible Portable Air Duct

Matterhorn Ionizer
 Electrical Box
 Plemthon Intake Fan

VIM Services
 5/2020 - 1/2021

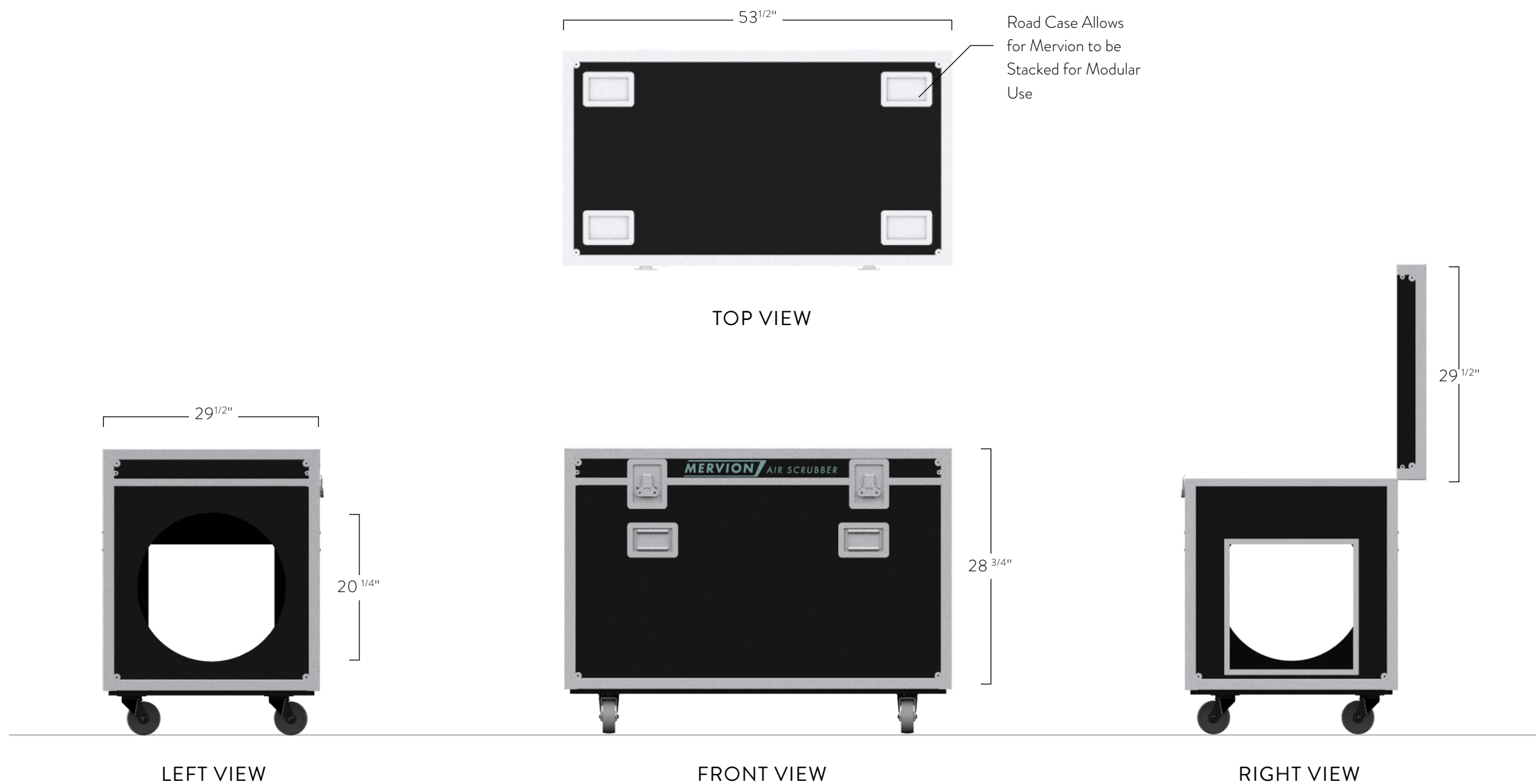
- Designed visual concept packet for Mervion Air Scrubber.
- Product modeled and rendered in Rhino.

Why Mervion?

Our unique pairing of electrostatic and mechanical filtration sets us apart. This combination allows us to use filters that are less dense and require less air pressure than traditional HEPA filters without a loss in performance— resulting in quieter and more energy efficient operation. The Mervion uses a 3 stage filter design and comes standard with premium HEPA and Opti-Pac Merv 13, and 30/30 Merv 8 filter.

Designed to Fit Your Needs Both Big and Small

The portable rolling design along with rugged Heavy Duty construction allows users to easily deploy the Mervion in a variety of spaces. Electrical cable extensions and additional ducting are also available.





Shandaken Inn Renderings

11/2020

- Designed concept packet of outdoor extension to the Shandaken Inn
- Modelled and rendered in Rhino & Photoshop.